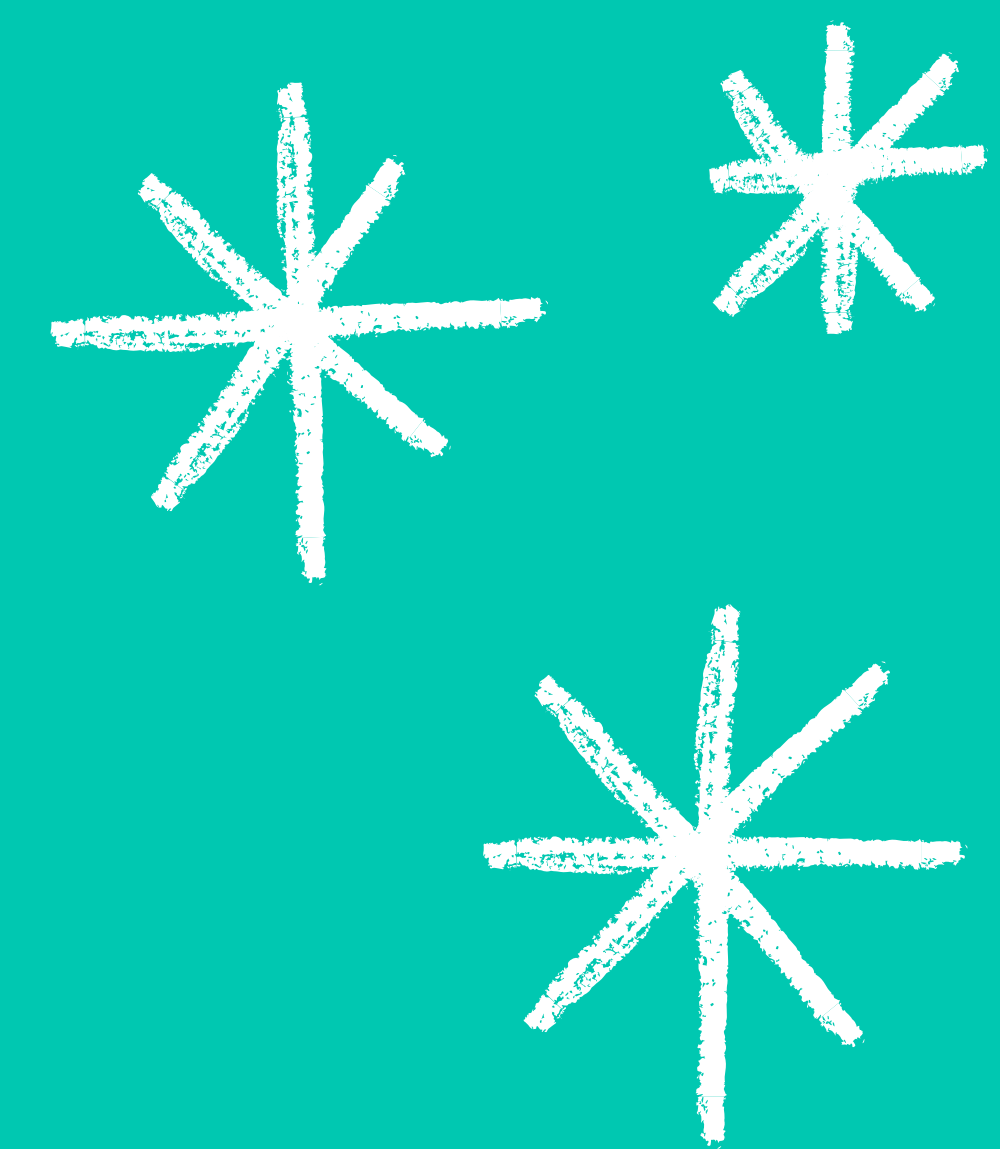
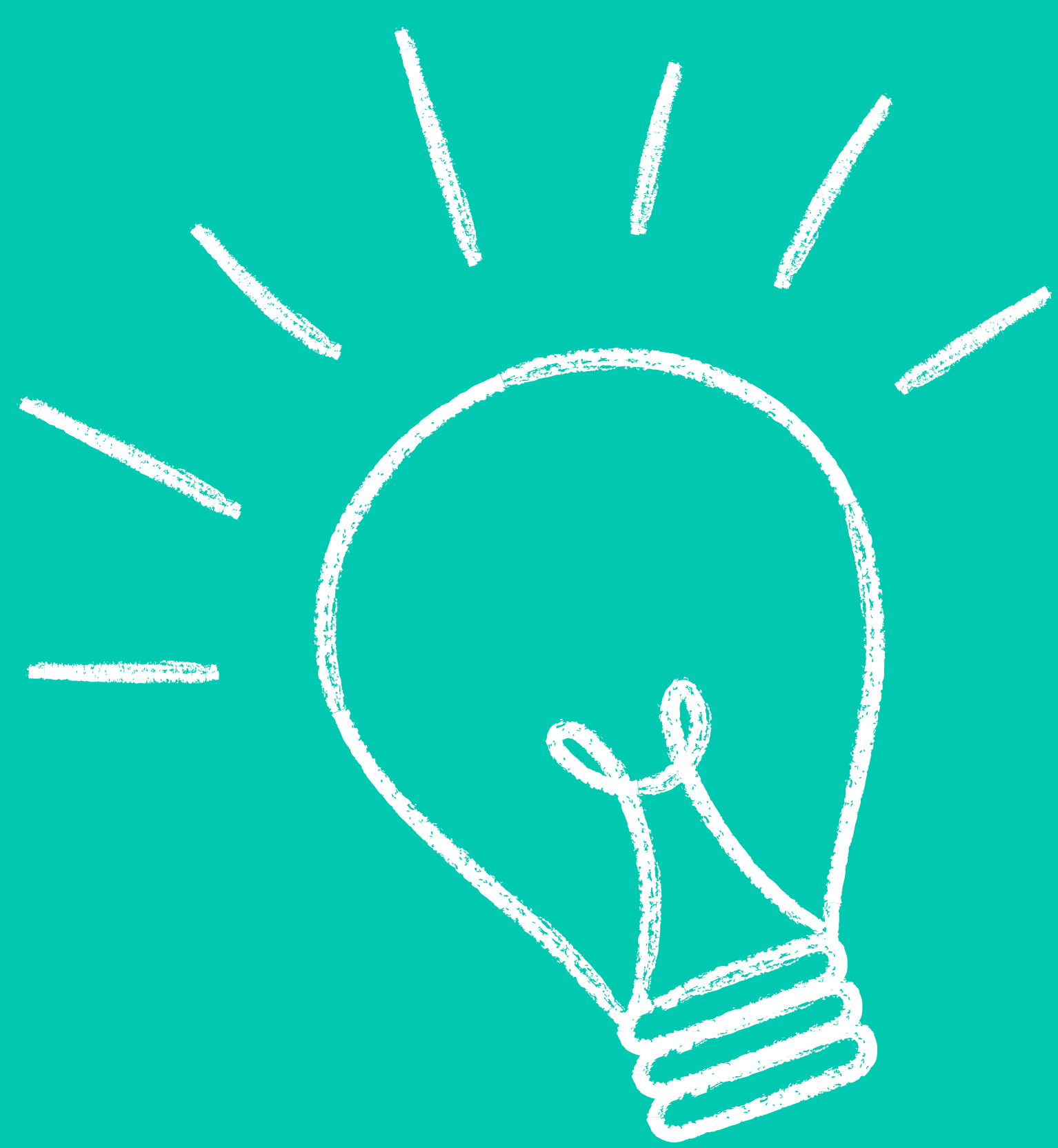


moshi

Meet the Moshlings

How Moshi characters teach kids social & emotional and cognitive skills.



Listen: Social & emotional skills

Self-Awareness - Recognize emotions—including stress and anxiety, happiness and joy, and anger and sadness—and learn how to identify them and apply them to situations.

Self-Management - Use techniques such as meditation, deep breathing, positive self-talk, and visualization to focus attention, regulate emotions, and ease away stress.

Social Awareness - Maintain a positive outlook, show concern for the feelings of others, and develop positive relationships. Reflect on one's role in actively promoting personal, family, and community well-being.

Responsible Decision-Making - Make decisions about personal behavior and interactions with peers that are safe, respectful, and in alignment with the classroom norms.

Relationship Skills - Establish and maintain caring relationships with others by sharing, being kind, and showing empathy and compassion for others' feelings. Seek and offer support and help when needed.

Play: Cognitive skills

Memory - Attention, critical thinking

Matching - Identification of patterns, similarities and differences

Puzzles - Logical reasoning, spatial awareness

Coloring - Creativity, object and color recognition

All - Problem solving, visual recognition, focus and concentration, fine motor skills



Discover more about these skills here.

Read why they're important here.

[Read Article](#)

[Read Article](#)



General Fuzuki

03



Glugg the Starry Calamari

04



SleepyPaws the Snoozy Koala

05



Fluttercup

06



Ping the Moshling Panda

07



Captain Squirk the Zoshling Leader

08



General Fuzuki


General Fuzuki is a wise Warrior Wombat Moshling. Many years ago, he was a guard of an ancient palace on the outskirts of what is now known as Moshimo City. Long since retired, General Fuzuki spends his time practicing Moshigomi – the art of creating magical paper sculptures that come to life.

A day with General Fuzuki

Listen

[General Fuzuki’s Magical Moshigomi Army](#)





Learn about the benefits of origami here.

[Read Article](#)

Use the color key to color this picture of General Fuzuki.

[Download](#)

Play



General Fuzuki
Magical Moshigomi
Army Coloring



General Fuzuki
Magical Moshigomi
Army Matching



General Fuzuki
Magical Moshigomi
Army Puzzle



General Fuzuki
Magical Moshigomi
Army Memory

Glugg the Starry Calamari



Glugg is a squid-like Moshling that lives beneath the ocean waves. He can change the way he looks just by concentrating -- from blue to pink, multicolored to patterned, and everything in between, but he loves to be sparkly best. Glugg also loves spending time with his friends and being himself!

A day with Glugg

Listen

 [Glugg the Starry Calamari](#)





Color this picture of Glugg the Starry Calamari.

[Download](#)

Play



Glugg the Starry Calamari Coloring



Glugg the Starry Calamari Matching



Glugg the Starry Calamari Puzzle



Glugg the Starry Calamari Memory

SleepyPaws the Snoozy Koala

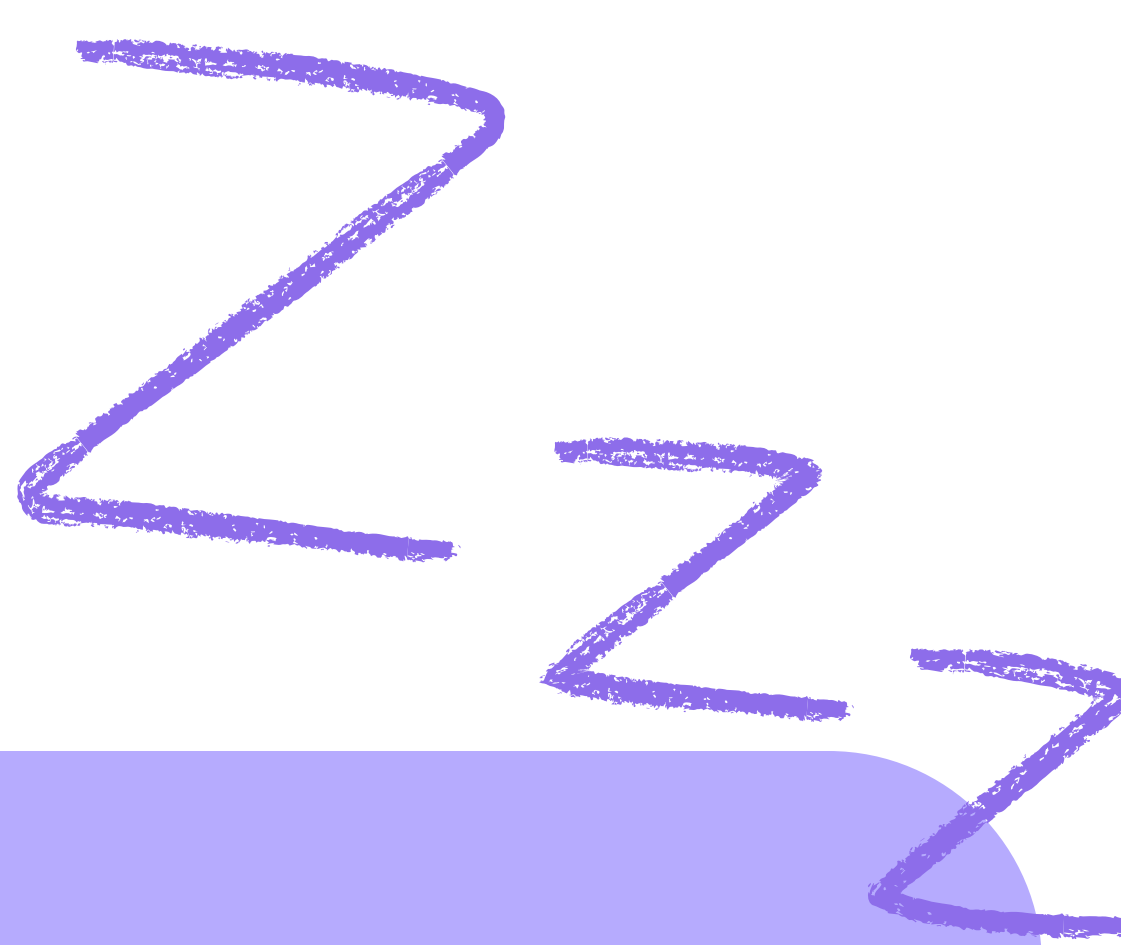


SleepyPaws lives high up in a treehouse by a dreamy Moshi harbor. He loves eucalyptus, wandering around the world of Moshi, and exploring the pebbly beach near his home. This cute and imaginative Moshling also enjoys playing with his friends and giving sleep-time advice.

A day with SleepyPaws

Listen

- ▶ Magical Moshlight Body Scan
- ▶ Breathing with SleepyPaws
- ▶ SleepyPaws’ Pebbly Beach Walk
- ▶ SleepyPaws’ Twilight Lullaby



Learn more about SleepyPaws here.

[Read Article](#)

Color this picture of SleepyPaws the Snoozy Koala.

[Download](#)

Play



SleepyPaws’ Teddy Bear Sleepover Coloring



SleepyPaws’ Teddy Bear Sleepover Matching



SleepyPaws’ Teddy Bear Sleepover Puzzle



SleepyPaws’ Teddy Bear Sleepover Memory



Fluttercup

Fluttercup is a mysterious Moshling Unicorn who runs the legendary School for Unicorns way beyond the rainbow. She is confident, charming, majestic, and a collector of many enchanting things. Among her favorite trinkets is her beloved magic harp, a gift from a dear friend, Hocus the Wizard.

A day with Fluttercup

Listen

- ▶ Breathing with Fluttercup
- ▶ Fluttercup’s Unicorn School Sonata
- ▶ Fluttercup’s Long Lost Harp
- ▶ Unicorn Sleep Meditation with Fluttercup

Read more about Fluttercup here.

[Read Article](#)

Read about how Moshi can help kids find their inner unicorn here.

[Read Article](#)

Play



Fluttercup’s Long Lost Magic Harp Coloring



Fluttercup’s Long Lost Magic Harp Matching



Fluttercup’s Long Lost Magic Harp Puzzle



Fluttercup’s Long Lost Magic Harp Memory

Ping the Moshling Panda



Ping loves paddleboarding and spreading positive vibes. She lives near a tropical lagoon and finds the soft plippity plop paddling sound wonderfully relaxing. When Ping isn't out on the ocean, she loves hanging with her pals. She also loves playing guitar while daydreaming in her super comfy hammock.

A day with Ping

Listen

- ▶ Ping's Positive Thoughts
- ▶ Breathing with Ping
- ▶ Ping's Paddleboarding Prelude
- ▶ Ping's Lush Lagoon Litter Pickup



Learn more about Ping here.

Read Article

Make a colorful paper chain of positive thoughts with Ping!

Download

Play



Ping's Beach Hammock Chill Time Coloring



Ping's Beach Hammock Chill Time Matching



Ping's Beach Hammock Chill Time Puzzle



Ping's Beach Hammock Chill Time Memory

Captain Squirk the Zoshling Leader

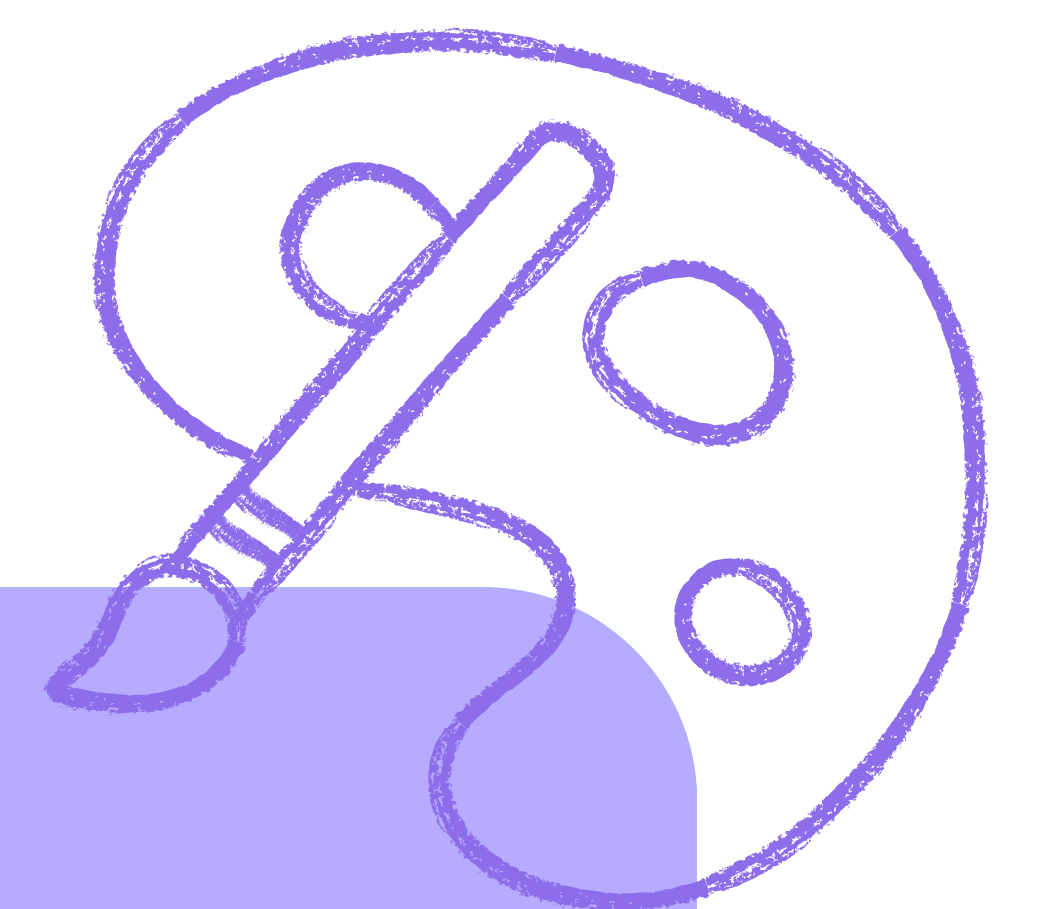
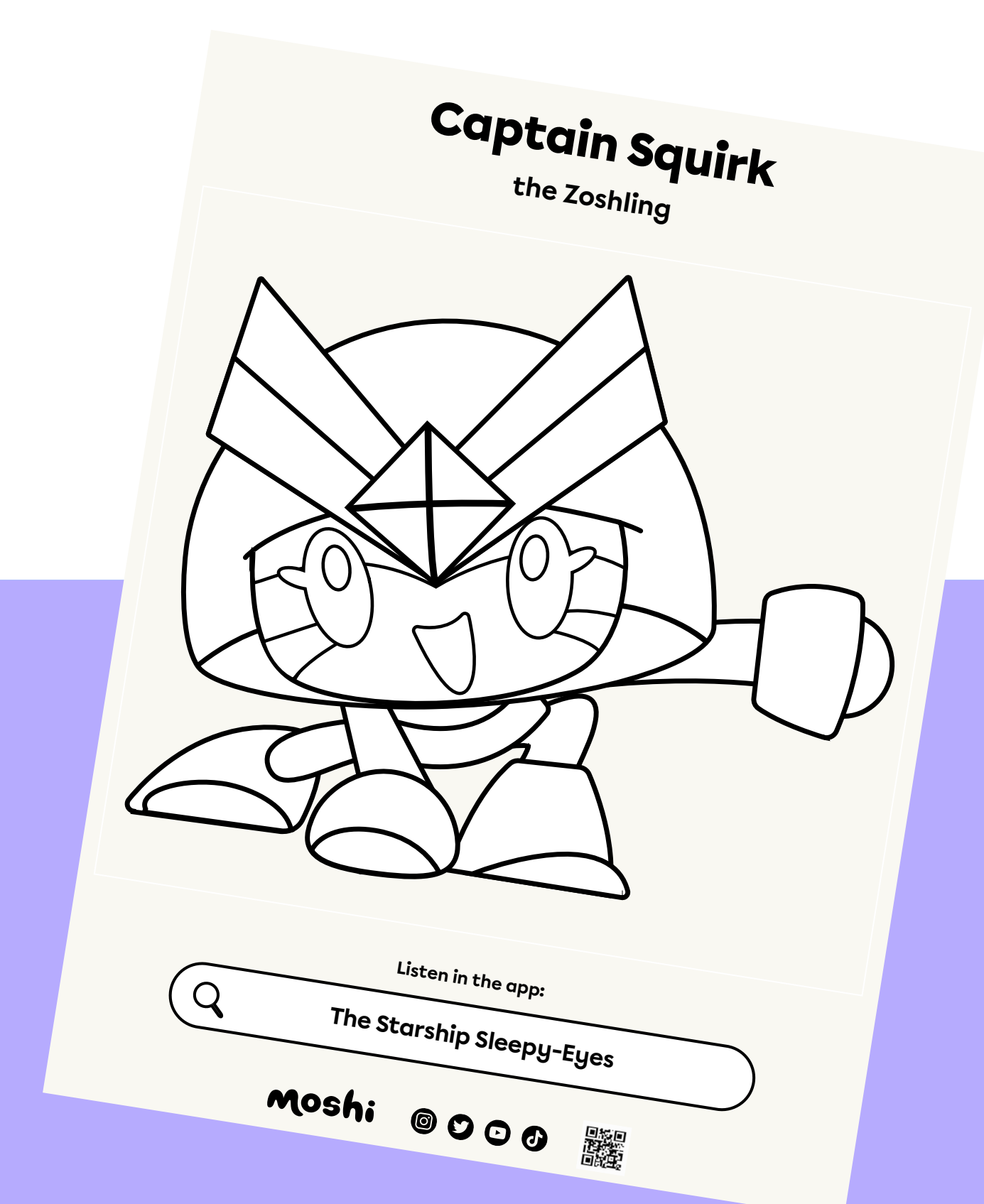


Captain Squirk is the leader of the Zoshlings and captain of Starship Sleepy-Eyes. With the help of his crew, he enjoys traveling and exploring the Swooniverse. He lives on the Zoshling home planet somewhere in the twinkly skies above the magical world of Moshi, in the space city of Melodia 9. He also loves the sound of space kazoos and plays the spoons!

A day with Captain Squirk

Listen

- ▶ Sounds of the Swooniverse
- ▶ Daily Diary Day 6, Captain Squirk's Gift
- ▶ The Starship Sleepy Eyes



Color this picture of Captain Squirk
the Zoshling Leader.

Download

Play



Across the
Swooniverse
Coloring



Across the
Swooniverse
Matching



Across the
Swooniverse
Puzzle



Across the
Swooniverse
Memory

Moshi is free for all educators.

Start your educator account

[Educator sign-up](#)

Parents, start your free 7 day trial

[Start FREE 7 day trial](#)

The Moshi logo, featuring the word "moshi" in a dark blue, rounded, lowercase font.